



TRANSPORTATION CABINET

Frankfort, Kentucky 40622
www.transportation.ky.gov/

Steven L. Beshear
Governor

Michael W. Hancock, P.E.
Secretary

April 25, 2011

CALL NO. 107
CONTRACT ID NO. 111312
Addendum # 2

Subject: Pike County, APD 0806 (035)
Letting April 29, 2011

- (1) Revised - Plan Sheets R2D and R5
- (2) Revised - Bid Items - Page 278 thru 141 of 284

Proposal revisions are available at <http://transportation.ky.gov/contract/>.

Plan revisions are available at <HTTP://WWW.LYNNIMAGING.COM/KYTRANSPORTATION/>

If you have any questions, please contact us at (502) 564-3500.

Sincerely,

A handwritten signature in blue ink that reads "Ryan Griffith".

Ryan Griffith
Director
Division of Construction Procurement

RG:jj

Enclosures



An Equal Opportunity Employer M/F/D

GENERAL SUMMARY

COUNTY OF	ITEM NO.	SHEET NO.
PIKE	12-263.62	R2d

ITEM CODE	ITEM	UNIT	KY. 80/U.S.460	RELOCATED POND CREEK RD.	APPR RT 114+90	APPR RT 64+40	TEMPORARY DIVERSION											TOTAL
6514	PAVEMENT STRIPING - PERM PAINT - 4 INCH	LIN FT	10535		378	999	7782											19694
6568	PAVEMENT MARKING - THERM STOP BAR - 24"	LIN FT		26	20	30												76
6574	PAVEMENT MARKING - THERM CURVE ARROW	EACH	11															11
6591	PAVEMENT MARKER TYPE V - B Y	EACH	152															152
6589	PAVEMENT MARKER TYPE V - M W	EACH	23															23
6570	PAVEMENT MARK PAINT CROSS HATCH	SQ.FT.	9981															9981
2242	WATER	M. GAL.	460															460
2585	EDGE KEY	LIN FT	44	31														75
8100	CONCRETE - CLASS 'A'	CU. YD.	8.24															8.24
8150	STEEL REINFORCEMENT	LBS.	367.50															367.5
20314ED	MILLED RUMBLE STRIPS	LIN FT	5340															5340
23131ER701	PIPELINE VIDEO INSPECTION	LIN FT	229.5															229.5
2434	R/W MARKER RURAL TYPE 1	EACH	43															43
1825	ISLAND CURB AND GUTTER	LIN FT		35														35
23640EC	PILES - STEEL WF 14x176	LIN FT	1158															1158
23641EC	PILES - STEEL WF 14x132	LIN FT	806															806
8039	PRE-DRILLING FOR PILES	LIN FT	1732															1732
2231	STRUCTURE GRANULAR BACKFILL	CU. YD.	2247															2247
2599	GEOTEXTILE FABRIC, TYPE IV	SQ. YD.	1711															1711
23642EC	CONCRETE LAGGING	SQ. FT.	7268															7268
2203	STRUCTURE EXCAVATION - UNCLASSIFIED	CU. YD.	888															888
10020NS	FUEL ADJUSTMENT	DOLLAR	29,845															29,845
10030NS	ASPHALT ADJUSTMENT	DOLLAR	18,032															18,032
2568	MOBILIZATION	L.S.	1															1
2569	DEMOBILIZATION	L.S.	1															1
2273	FENCE - 4 FT CHAIN LINK	LIN FT	608															608

PREPARED BY _____ DATE _____
 CHECKED BY _____ DATE _____
 APPROVED BY _____ DATE _____

Cell Library: KyTc.cel
 Cell Name: sgs
 DD-MMM-YYYY HH:MM

FOR PAVING QUANTITIES -
 SEE PAVING SUMMARY SHEET

FOR PIPE DRAINAGE QUANTITIES -
 SEE PIPE DRAINAGE SUMMARY SHEET

GENERAL SUMMARY

GENERAL SUMMARY

COUNTY OF	ITEM NO.	SHEET NO.
PIKE	12-263.62	R2d

REVISED 04-22-2011

ITEM CODE	ITEM	UNIT	KY. 80/U.S.460	RELOCATED POND CREEK RD.	APPR RT 114+90	APPR RT 64+40	TEMPORARY DIVERSION											TOTAL
6514	PAVEMENT STRIPING - PERM PAINT - 4 INCH	LIN FT	10535		378	999	7782											19694
6568	PAVEMENT MARKING - THERM STOP BAR - 24"	LIN FT		26	20	30												76
6574	PAVEMENT MARKING - THERM CURVE ARROW	EACH	11															11
6591	PAVEMENT MARKER TYPE V - B Y	EACH	152															152
6589	PAVEMENT MARKER TYPE V - M W	EACH	23															23
6570	PAVEMENT MARK PAINT CROSS HATCH	SQ.FT.	9981															9981
2242	WATER	M. GAL.	460															460
2585	EDGE KEY	LIN FT	44	31														75
8100	CONCRETE - CLASS 'A'	CU. YD.	8.24															8.24
8150	STEEL REINFORCEMENT	LBS.	367.50															367.5
20314ED	MILLED RUMBLE STRIPS	LIN FT	5340															5340
23131ER701	PIPELINE VIDEO INSPECTION	LIN FT	229.5															229.5
2434	R/W MARKER RURAL TYPE 1	EACH	43															43
1825	ISLAND CURB AND GUTTER	LIN FT		35														35
23640EC	PILES - STEEL WF 14x176	LIN FT	1158															1158
23641EC	PILES - STEEL WF 14x132	LIN FT	806															806
8039	PRE-DRILLING FOR PILES	LIN FT	1732															1732
2231	STRUCTURE GRANULAR BACKFILL	CU. YD.	2247															2247
2599	GEOTEXTILE FABRIC, TYPE IV	SQ. YD.	1711															1711
23642EC	CONCRETE LAGGING	SQ. FT.	7268															7268
2203	STRUCTURE EXCAVATION - UNCLASSIFIED	CU. YD.	888															888
10020NS	FUEL ADJUSTMENT	DOLLAR	29,845															29,845
10030NS	ASPHALT ADJUSTMENT	DOLLAR	18,032															18,032
2568	MOBILIZATION	L.S.	1															1
2569	DEMobilIZATION	L.S.	1															1
2273	FENCE - 4 FT CHAIN LINK	LIN FT	608															608

PREPARED BY _____ DATE _____
 CHECKED BY _____ DATE _____
 APPROVED BY _____ DATE _____

Cell Library: kytfc.cel
 Cell Name: sgs
 DD-MMM-YYYY HH:MM

FOR PAVING QUANTITIES -
 SEE PAVING SUMMARY SHEET

FOR PIPE DRAINAGE QUANTITIES -
 SEE PIPE DRAINAGE SUMMARY SHEET

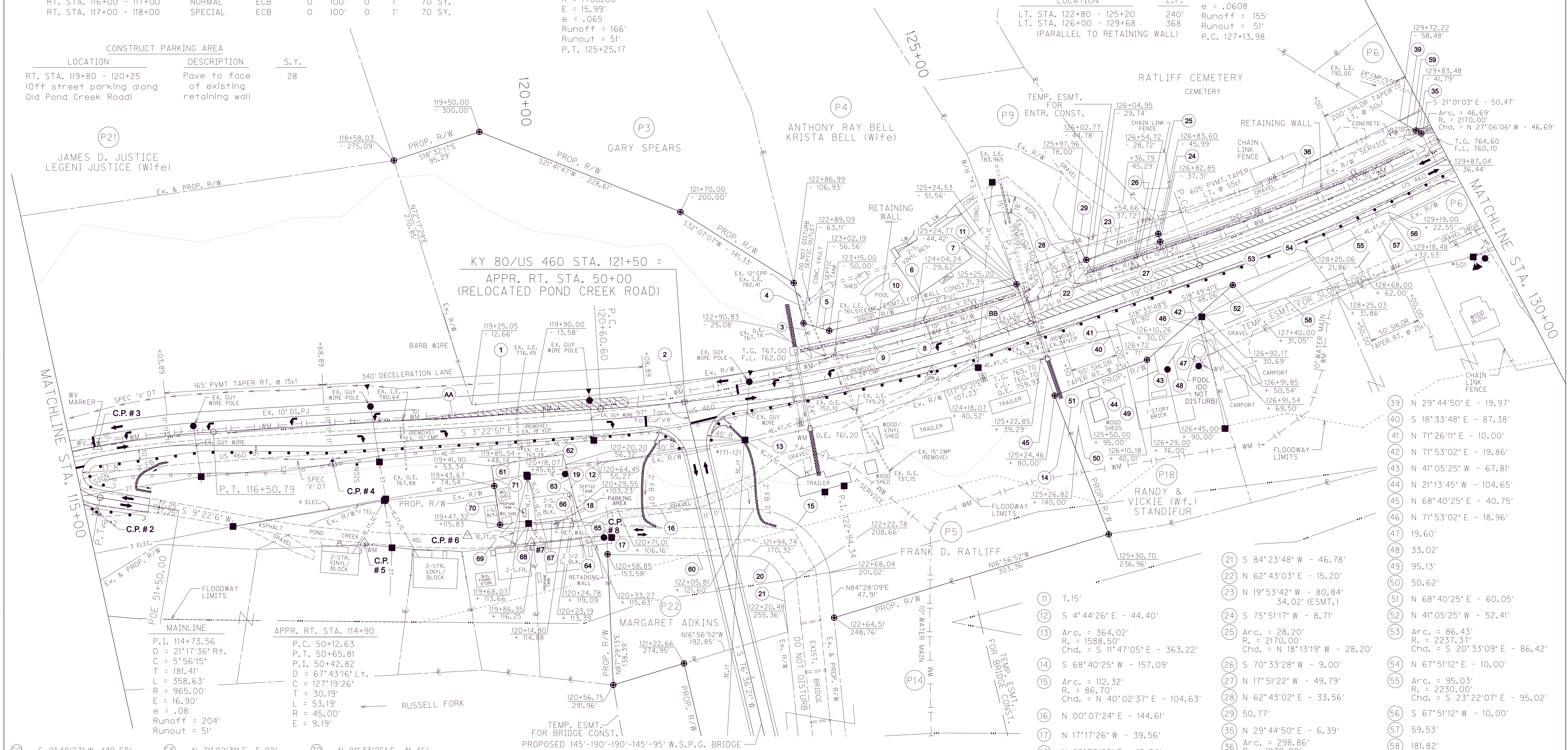
DITCH NOTES

LOCATION	TYPE	LINING	W	L	T	D	QUANT.
LT. STA. 115+00 - 118+50	SPECIAL	ECB	0	350'	0	1.5'	425 SY.
LT. STA. 118+50 - 119+50	SPECIAL	ECB	0	100'	0	1'	81 SY.
LT. STA. 119+50 - 122+75	NORMAL	ECB	0	325'	0	1'	263 SY.
LT. STA. 122+75 - 125+30	SPECIAL	ECB	0	255'	0	1.5'	190 SY.
LT. STA. 125+30 - 125+46	NORMAL	ECB	0	16'	0	1'	12 SY.
LT. STA. 125+80 - 126+00	NORMAL	ECB	0	20'	0	1'	14 SY.
LT. STA. 126+00 - 127+00	SPECIAL	ECB	0	100'	0	1'	70 SY.
LT. STA. 127+00 - 128+50	SPECIAL	ECB	0	150'	0	1'	105 SY.
LT. STA. 128+50 - 130+00	NORMAL	ECB	0	150'	0	1'	105 SY.
RT. STA. 115+75 - 116+00	SPECIAL	CL.III	2'	65'	2'	1'	47 TONS
RT. STA. 116+00 - 117+00	NORMAL	ECB	0	100'	0	1'	70 SY.
RT. STA. 117+00 - 118+00	SPECIAL	ECB	0	100'	0	1'	70 SY.

CONST. STEEL "W" BEAM GUARDRAIL (S.F.)		CONST. ENTRANCE	
LOCATION	L.F.	TYPE	SURFACE
RT. STA. 115+13 - STA. 121+43	675'	RES.	ASPH.
RT. STA. 121+70 - STA. 130+00	862.5'	CEMETERY ENTR.	ASPH.

CONST. SOLDIER PILE RETAINING WALL	
LOCATION	L.F.
LT. STA. 122+80 - 125+20	240'
LT. STA. 126+00 - 129+68	368

CONSTRUCT PARKING AREA		
LOCATION	DESCRIPTION	S.Y.
RT. STA. 119+80 - 120+25 (Off street parking along Old Pond Creek Road)	Pave to face of existing retaining wall	28



- P6 - BOBBIE M. RATLIFF
- P9 - LILLIAN Z. BELCHER (Deceased)
- BETHEL BEANE (Single)



DATE _____
 CHECKED BY _____
 APPROVED BY _____

Cell Library: kytfc.cel
 Cell Name: sp
 DD-MMM-YYYY HH:MM

- 60 - S 0°48'27" W, 149.58'
- 61 - S 10°10'23" E, 43.94'
- 62 - S 7°45'49" E, 32.63'
- 63 - S 75°20'21" W, 58.72'
- 64 - N 25°33'12" W, 9.17'
- 65 - N 71°02'31" E, 5.92'
- 66 - N 13°37'25" W, 8.42'
- 67 - N 6°06'46" W, 28.59'
- 68 - N 4°40'13" E, 18.46'
- 69 - N 9°20'58" W, 20.86'
- 70 - N 81°33'25" E, 41.46'
- 71 - N 81°51'51" E, 21.27'
- AA 150° TURNING LANE TAPER @ 15:1
(STA. 118+65 TO STA. 120+30)
- BB 150° TURNING LANE TAPER @ 15:1
(STA. 124+46 TO STA. 125+96)

- 1 N 4°11'42" W - 64.95'
- 2 Arc. = 298.33'
R. = 1720.00'
Chd. = N 8°32'55" W - 297.95'
- 3 N 76°20'23" E - 38.07'
- 4 S 76°20'23" W - 43.86'
- 5 S 16°06'55" W - 28.27' (R/W)
14.03' (ESMT.)
- 6 S 13°55'26" E - 203.89'
- 7 S 69°07'17" W - 13.03'
- 8 N 17°51'21" W - 118.78'
- 9 Arc. = 111.67'
R. = 1720.00'
Chd. = N 15°22'43" W - 111.65'
- 10 215.18'

- 11 7.15'
- 12 S 4°44'26" E - 44.40'
- 13 Arc. = 364.02'
R. = 1588.50'
Chd. = S 11°47'05" E - 363.22'
- 14 S 68°40'25" W - 157.09'
- 15 Arc. = 112.32'
R. = 86.70'
Chd. = N 40°02'37" E - 104.63'
- 16 N 00°07'24" E - 144.61'
- 17 N 17°17'26" W - 39.56'
- 18 N 69°56'08" E - 12.94'
- 19 N 75°20'21" E - 47.83'
- 20 Arc. = 54.09'
R. = 37.00'
Chd. = S 42°31'06" W - 49.40'
- 21 S 84°23'48" W - 46.78'
- 22 N 62°43'03" E - 15.20'
- 23 N 19°53'42" W - 80.84'
34.02' (ESMT.)
- 24 S 75°51'17" W - 8.71'
- 25 Arc. = 28.20'
R. = 2170.00'
Chd. = N 18°13'19" W - 28.20'
- 26 S 70°33'28" W - 9.00'
- 27 N 17°51'22" W - 49.79'
- 28 N 62°43'02" E - 33.56'
- 29 50.77'
- 30 19.60'
- 31 33.02'
- 32 95.13'
- 33 50.62'
- 34 N 68°40'25" E - 60.05'
- 35 N 41°05'25" W - 52.41'
- 36 Arc. = 86.43'
R. = 2237.37'
Chd. = S 20°33'09" E - 86.42'
- 37 N 67°51'12" E - 10.00'
- 38 Arc. = 95.03'
R. = 2230.00'
Chd. = S 23°22'07" E - 95.02'
- 39 S 67°51'12" W - 10.00'
- 40 59.53'
- 41 181.82'
- 42 197.65'

SCALE: 1" = 50'

KY 80/US 460
 STA. 115+00 TO STA. 130+00

REVISED 04-22-2011

- P6 - BOBBIE M. RATLIFF
- P9 - LILLIAN Z. BELCHER (Deceased)
- BETHEL BEANE (Single)



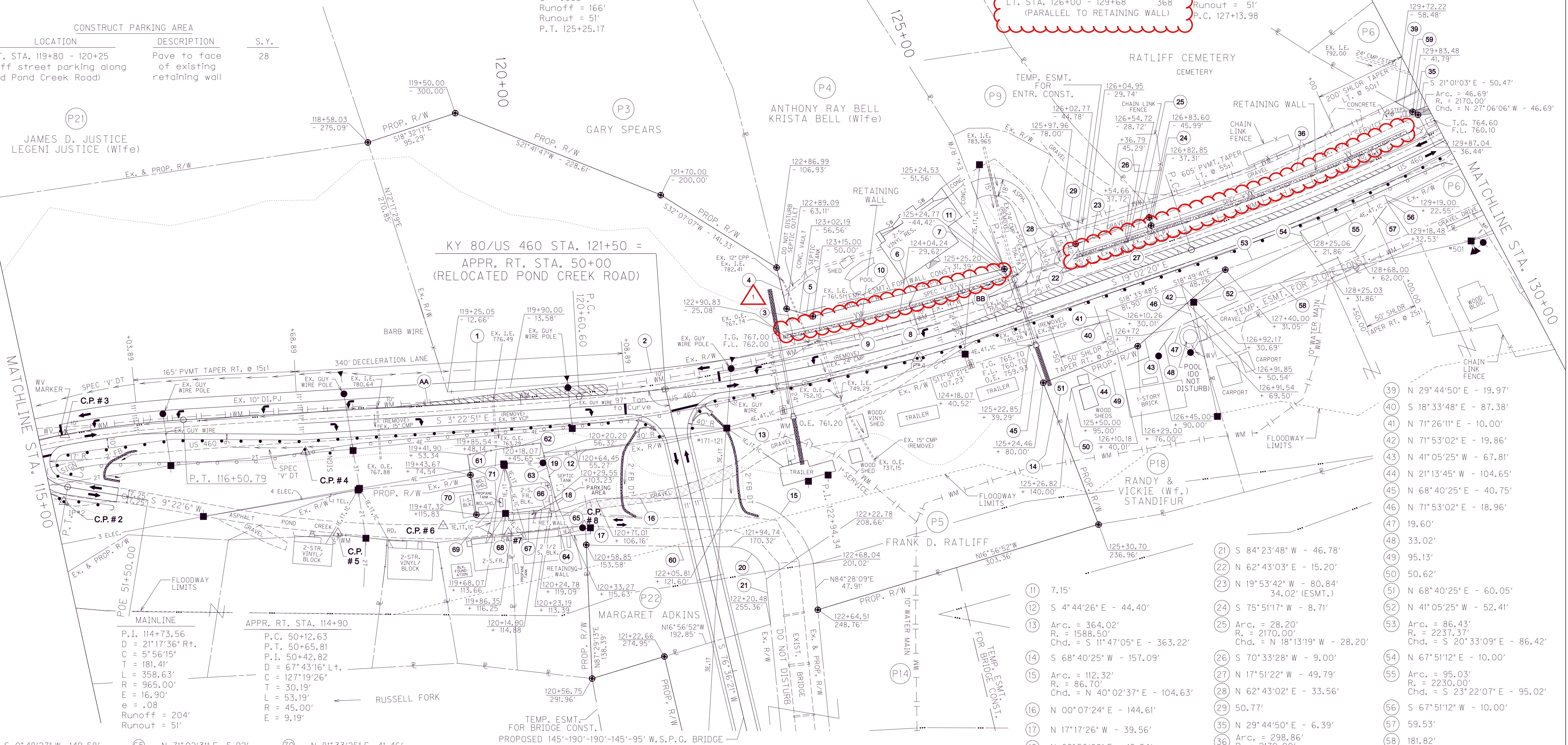
DITCH NOTES				CONST. STEEL "W" BEAM GUARDRAIL (S.F.)		CONST. ENTRANCE								
LOCATION	TYPE	LINING	W	L	T	LOCATION	L.F.	END TREATMENT	LOCATION	WIDTH	TYPE	SURFACE	QTY. SY.	ENT. PIPE
LT. STA. 115+00 - 118+50	SPECIAL	ECB	0	350'	0	RT. STA. 115+13 - STA. 121+43	675'	(1) TERM. SECT. NO. 1, B.E.Conn.Ty.A	LT. STA. 125+63	18'	RES.	ASPH.	287	34 L.F. - 15'
LT. STA. 118+50 - 119+50	SPECIAL	ECB	0	100'	0	RT. STA. 121+70 - STA. 130+00	862.5'	B.E.Conn.Ty.A	LT. STA. 49+50	12'	CEMETERY ENTR.	ASPH.	53	42 L.F. - 15'
LT. STA. 119+50 - 122+75	NORMAL	ECB	0	325'	0				(OFF OF ENTR. LT. STA. 125+63)					28 L.F. - 15'
LT. STA. 122+75 - 125+30	SPECIAL	ECB	0	255'	0									
LT. STA. 125+30 - 125+46	NORMAL	ECB	0	16'	0									
LT. STA. 125+46 - 126+00	NORMAL	ECB	0	20'	0									
LT. STA. 126+00 - 127+00	SPECIAL	ECB	0	100'	0									
LT. STA. 127+00 - 128+50	SPECIAL	ECB	0	150'	0									
LT. STA. 128+50 - 130+00	NORMAL	ECB	0	150'	0									
RT. STA. 115+75 - 116+00	SPECIAL	CL.III	2'	65'	2'									
RT. STA. 116+00 - 117+00	NORMAL	ECB	0	100'	0									
RT. STA. 117+00 - 118+00	SPECIAL	ECB	0	100'	0									

CONSTRUCT PARKING AREA		
LOCATION	DESCRIPTION	S.Y.
RT. STA. 119+80 - 120+25 (Off street parking along Old Pond Creek Road)	Pave to face of existing retaining wall	28

MAINLINE		REMOVE EXISTING GUARDRAIL	
LOCATION	L.F.	LOCATION	L.F.
P.I. 122+94.34		RT. STA. 115+00 - 115+05	7'
D = 15°39'28" Lt.		RT. STA. 115+30 - 124+03	878'
C = 3°22'13"		RT. STA. 124+26 - 129+95	577'
L = 233.74'			
L = 464.58'			
R = 1700.00'			
E = 15.99'			
e = .065			
Runoff = 166'			
Runout = 51'			
P.T. 125+25.17			

CONST. SOLDIER PILE RETAINING WALL		MAINLINE	
LOCATION	L.F.	LOCATION	L.F.
LT. STA. 122+80 - 125+20	240'	P.I. 130+55.09	
LT. STA. 126+00 - 129+68	368	D = 20°15'06" Lt.	
(SEE SHEETS R29 & R30)		C = 2°59'59"	
		T = 341.11'	
		L = 675.10'	
		R = 1910.00'	
		E = 30.22'	
		e = .0608	
		Runoff = 155'	
		Runout = 51'	
		P.C. 127+13.98	

CONST. CHAIN LINK FENCE
 LOCATION L.F.
 LT. STA. 122+80 - 125+20 240'
 LT. STA. 126+00 - 129+68 368'
 (PARALLEL TO RETAINING WALL)



- | | | | | | | | | |
|----------------------------|---------------------------|---|--|------------------------------|--|--|--|--|
| 60 - S 0°48'27" W, 149.58' | 65 - N 71°02'31" E, 5.92' | 70 - N 81°33'25" E, 41.46' | 11 - 7.15' | 16 - N 00°07'24" E - 144.61' | 21 - S 84°23'48" W - 46.78' | 26 - S 70°33'28" W - 9.00' | 31 - N 29°44'50" E - 6.39' | 36 - Arc. = 298.86'
R. = 2170.00'
Chd. = N 22°32'23" W-298.62' |
| 61 - S 10°10'23" E, 43.94' | 66 - N 13°37'25" W, 8.42' | 71 - N 81°51'51" E, 21.27' | 12 - S 4°44'26" E - 44.40' | 17 - N 17°17'26" W - 39.56' | 22 - N 62°43'03" E - 15.20' | 32 - N 17°51'22" W - 49.79' | 37 - Arc. = 54.09'
R. = 37.00' | 42 - N 71°26'11" E - 10.00' |
| 62 - S 7°45'49" E, 32.63' | 67 - N 6°06'46" W, 28.59' | AA 150° TURNING LANE TAPER @ 15:1
(STA. 118+65 TO STA. 120+30) | 13 - Arc. = 364.02'
R. = 1588.50'
Chd. = S 11°47'05" E - 363.22' | 18 - N 69°56'08" E - 12.94' | 23 - N 19°53'42" W - 80.84'
34.02' (ESMT.) | 33 - N 41°05'25" W - 67.81' | 38 - Arc. = 86.43'
R. = 2237.37'
Chd. = S 20°33'09" E - 86.42' | 43 - N 71°53'02" E - 19.86' |
| 63 - S 75°20'21" W, 58.72' | 68 - N 4°40'13" E, 18.46' | BB 150° TURNING LANE TAPER @ 15:1
(STA. 124+46 TO STA. 125+96) | 14 - S 68°40'25" W - 157.09' | 19 - N 75°20'21" E - 47.83' | 24 - S 75°51'17" W - 8.71' | 34 - N 41°05'25" W - 52.41' | 39 - N 29°44'50" E - 19.97' | 44 - N 21°13'45" W - 104.65' |
| 64 - N 25°33'12" W, 9.17' | 69 - N 9°20'58" W, 20.86' | | 15 - Arc. = 112.32'
R. = 86.70'
Chd. = N 40°02'37" E - 104.63' | 20 - N 17°51'21" W - 118.78' | 25 - Arc. = 28.20'
R. = 2170.00'
Chd. = N 18°13'19" W - 28.20' | 35 - N 67°51'12" E - 10.00' | 40 - S 18°33'48" E - 87.38' | 45 - N 68°40'25" E - 40.75' |
| | | | 16 - N 00°07'24" E - 144.61' | 21 - 215.18' | 26 - S 70°33'28" W - 9.00' | 36 - Arc. = 298.86'
R. = 2170.00'
Chd. = N 22°32'23" W-298.62' | 41 - N 71°26'11" E - 10.00' | 46 - N 71°53'02" E - 18.96' |
| | | | 17 - N 17°17'26" W - 39.56' | | 27 - N 17°51'22" W - 49.79' | | 42 - N 71°53'02" E - 19.86' | 47 - 19.60' |
| | | | 18 - N 69°56'08" E - 12.94' | | 28 - N 62°43'02" E - 33.56' | | 43 - N 41°05'25" W - 67.81' | 48 - 33.02' |
| | | | 19 - N 75°20'21" E - 47.83' | | 29 - 50.77' | | 44 - N 21°13'45" W - 104.65' | 49 - 95.13' |
| | | | | | 30 - 7.15' | | 45 - N 68°40'25" E - 40.75' | 50 - 50.62' |
| | | | | | 31 - N 29°44'50" E - 6.39' | | 46 - N 71°53'02" E - 18.96' | 51 - N 68°40'25" E - 60.05' |
| | | | | | 32 - N 17°51'22" W - 49.79' | | 47 - 19.60' | 52 - N 41°05'25" W - 52.41' |
| | | | | | 33 - N 41°05'25" W - 67.81' | | 48 - 33.02' | 53 - Arc. = 86.43'
R. = 2237.37'
Chd. = S 20°33'09" E - 86.42' |
| | | | | | 34 - N 41°05'25" W - 52.41' | | 49 - 95.13' | 54 - N 67°51'12" E - 10.00' |
| | | | | | 35 - N 68°40'25" E - 60.05' | | 50 - 50.62' | 55 - Arc. = 95.03'
R. = 2230.00'
Chd. = S 23°22'07" E - 95.02' |
| | | | | | 36 - Arc. = 298.86'
R. = 2170.00'
Chd. = N 22°32'23" W-298.62' | | 51 - N 68°40'25" E - 60.05' | 56 - S 67°51'12" W - 10.00' |
| | | | | | | | 52 - N 41°05'25" W - 52.41' | 57 - 59.53' |
| | | | | | | | 53 - Arc. = 86.43'
R. = 2237.37'
Chd. = S 20°33'09" E - 86.42' | 58 - 181.82' |
| | | | | | | | 54 - N 67°51'12" E - 10.00' | 59 - 197.65' |

KY 80/US 460
 STA. 115+00 TO STA. 130+00

SCALE: 1" = 50'

PREPARED BY: kytfc, cel
 CHECKED BY: Cell Name: sp
 APPROVED BY: DD-MMM-YYYY HH:MM

CONTRACT ID: 111312
COUNTY: PIKE
PROPOSAL: APD 80-6 (035)

PAGE: 1
LETTING: 04/29/11
CALL NO: 107

LINE NO	ITEM	DESCRIPTION	APPROXIMATE QUANTITY	UNIT	UNIT PRICE	AMOUNT
SECTION 0001 PAVING						
0010	00003	CRUSHED STONE BASE	9,705.000	TON		
0020	00100	ASPHALT SEAL AGGREGATE	38.000	TON		
0030	00212	CL2 ASPH BASE 1.00D PG64-22	2,504.000	TON		
0040	00214	CL3 ASPH BASE 1.00D PG64-22	4,763.000	TON		
0050	00291	EMULSIFIED ASPHALT RS-2	4.000	TON		
0060	00301	CL2 ASPH SURF 0.38D PG64-22	594.000	TON		
0070	00339	CL3 ASPH SURF 0.38D PG64-22	647.000	TON		
SECTION 0002 ROADWAY						
0080	00078	CRUSHED AGGREGATE SIZE NO 2	5.000	TON		
0090	01000	PERFORATED PIPE-4 IN	299.000	LF		
0100	01010	NON-PERFORATED PIPE-4 IN	50.000	LF		
0110	01020	PERF PIPE HEADWALL TY 1-4 IN	1.000	EACH		
0120	01024	PERF PIPE HEADWALL TY 2-4 IN	1.000	EACH		
0130	01028	PERF PIPE HEADWALL TY 3-4 IN	3.000	EACH		
0140	01825	ISLAND CURB AND GUTTER	35.000	LF		
0150	01982	DELINEATOR FOR GUARDRAIL-WHITE	43.000	EACH		
0160	01984	DELINEATOR FOR BARRIER-WHITE	50.000	EACH		
0170	01985	DELINEATOR FOR BARRIER-YELLOW	5.000	EACH		
0180	02014	BARRICADE-TYPE III	2.000	EACH		
0190	02091	REMOVE PAVEMENT	1,127.000	SQYD		

CONTRACT ID: 111312
COUNTY: PIKE
PROPOSAL: APD 80-6 (035)

PAGE: 2
LETTING: 04/29/11
CALL NO: 107

LINE NO	ITEM	DESCRIPTION	APPROXIMATE QUANTITY	UNIT	UNIT PRICE	AMOUNT
0200	02159	TEMP DITCH	1,895.000	LF		
0210	02200	ROADWAY EXCAVATION	271,584.000	CUYD		
0220	02203	STRUCTURE EXCAV-UNCLASSIFIED	888.000	CUYD		
0230	02231	STRUCTURE GRANULAR BACKFILL	2,247.000	CUYD		
0240	02242	WATER	460.000	MGAL		
0241	02273	FENCE-4 FT CHAIN LINK (ADDED: 4-25-11)	608.000	LF		
0250	02351	GUARDRAIL-STEEL W BEAM-S FACE	1,587.500	LF		
0260	02360	GUARDRAIL TERMINAL SECTION NO 1	8.000	EACH		
0270	02363	GUARDRAIL CONNECTOR TO BRIDGE END TY A	4.000	EACH		
0280	02381	REMOVE GUARDRAIL	2,385.000	LF		
0290	02404	SEPTIC TANK TREATMENT	1.000	EACH		
0300	02434	R/W MARKER RURAL TYPE 1	43.000	EACH		
0310	02475	PLUG WATER WELL	1.000	EACH		
0320	02482	CHANNEL LINING CLASS IA	5.000	TON		
0330	02483	CHANNEL LINING CLASS II	116.000	TON		
0340	02484	CHANNEL LINING CLASS III	288.000	TON		
0350	02488	CHANNEL LINING CLASS IV	58.000	CUYD		
0360	02545	CLEARING AND GRUBBING (26 ACRES)	(1.00)	LS		
0370	02562	SIGNS	486.750	SQFT		
0380	02585	EDGE KEY	75.000	LF		
0390	02599	FABRIC-GEOTEXTILE TYPE IV	1,711.000	SQYD		

CONTRACT ID: 111312
COUNTY: PIKE
PROPOSAL: APD 80-6 (035)

PAGE: 3
LETTING: 04/29/11
CALL NO: 107

LINE NO	ITEM	DESCRIPTION	APPROXIMATE QUANTITY	UNIT	UNIT PRICE	AMOUNT
0400	02600	FABRIC GEOTEXTILE TY IV FOR PIPE	4,600.000	SQYD		
0410	02650	MAINTAIN & CONTROL TRAFFIC	(1.00)	LS		
0420	02651	DIVERSIONS (BY-PASS DETOURS)	(1.00)	LS		
0430	02671	PORTABLE CHANGEABLE MESSAGE SIGN	4.000	EACH		
0440	02701	TEMP SILT FENCE	1,895.000	LF		
0450	02703	SILT TRAP TYPE A	24.000	EACH		
0460	02704	SILT TRAP TYPE B	24.000	EACH		
0470	02705	SILT TRAP TYPE C	24.000	EACH		
0480	02706	CLEAN SILT TRAP TYPE A	72.000	EACH		
0490	02707	CLEAN SILT TRAP TYPE B	72.000	EACH		
0500	02708	CLEAN SILT TRAP TYPE C	72.000	EACH		
0510	02709	CLEAN TEMP SILT FENCE	1,895.000	LF		
0520	02726	STAKING	(1.00)	LS		
0530	02775	ARROW PANEL	2.000	EACH		
0540	03171	CONCRETE BARRIER WALL TYPE 9T	1,300.000	LF		
0550	05950	EROSION CONTROL BLANKET	3,359.000	SQYD		
0560	05952	TEMP MULCH	107,487.000	SQYD		
0570	05953	TEMP SEEDING AND PROTECTION	53,653.000	SQYD		
0580	05966	TOPDRESSING FERTILIZER	4.020	TON		
0590	05985	SEEDING AND PROTECTION	107,487.000	SQYD		
0600	05989	SPECIAL SEEDING CROWN VETCH	26,872.000	SQYD		

CONTRACT ID: 111312
COUNTY: PIKE
PROPOSAL: APD 80-6 (035)

PAGE: 4
LETTING: 04/29/11
CALL NO: 107

LINE NO	ITEM	DESCRIPTION	APPROXIMATE QUANTITY	UNIT	UNIT PRICE	AMOUNT
0610	06510	PAVE STRIPING-TEMP PAINT-4 IN	20,009.000	LF		
0620	06514	PAVE STRIPING-PERM PAINT-4 IN	19,694.000	LF		
0630	06568	PAVE MARKING-THERMO STOP BAR-24IN	76.000	LF		
0640	06570	PAVE MARKING-PAINT CROSS-HATCH	9,981.000	SQFT		
0650	06574	PAVE MARKING-THERMO CURV ARROW	11.000	EACH		
0660	06589	PAVEMENT MARKER TYPE V-MW	23.000	EACH		
0670	06591	PAVEMENT MARKER TYPE V-BY	152.000	EACH		
0680	08039	PRE-DRILLING FOR PILES	1,732.000	LF		
0690	08100	CONCRETE-CLASS A	8.240	CUYD		
0700	08150	STEEL REINFORCEMENT	367.500	LB		
0710	08901	CRASH CUSHION TY VI CLASS BT TL2	4.000	EACH		
0720	10020NS	FUEL ADJUSTMENT	29,845.000	DOLL	1.00	29,845.00
0730	10030NS	ASPHALT ADJUSTMENT	18,032.000	DOLL	1.00	18,032.00
0740	20314ED	MILLED RUMBLE STRIPS	5,340.000	LF		
0750	21802EN	G/R STEEL W BEAM-S FACE (7 FT POST)	2,687.500	LF		
0760	23131ER701	PIPELINE VIDEO INSPECTION	229.500	LF		
0770	23640EC	PILES-STEEL WF 14 X 176	1,158.000	LF		
0780	23641EC	PILES-STEEL WF 14 X 132	806.000	LF		
0790	23642EC	CONCRETE LAGGING	7,268.000	SQFT		
SECTION 0003 DRAINAGE						
0800	00440	ENTRANCE PIPE-15 IN	173.000	LF		

CONTRACT ID: 111312
COUNTY: PIKE
PROPOSAL: APD 80-6 (035)

PAGE: 5
LETTING: 04/29/11
CALL NO: 107

LINE NO	ITEM	DESCRIPTION	APPROXIMATE QUANTITY	UNIT	UNIT PRICE	AMOUNT
0810	00462	CULVERT PIPE-18 IN	47.000	LF		
0820	00464	CULVERT PIPE-24 IN	363.000	LF		
0830	00472	CULVERT PIPE-60 IN	49.000	LF		
0840	01451	S & F BOX INLET-OUTLET-24 IN	1.000	EACH		
0850	01490	DROP BOX INLET TYPE 1	5.000	EACH		
0860	01643	JUNCTION BOX-24 IN	1.000	EACH		
0870	01653	JUNCTION BOX-SPECIAL	2.000	EACH		
0880	01691	FLUME INLET TYPE 2	2.000	EACH		
0890	02403	REMOVE CONCRETE MASONRY	2.700	CUYD		
0900	02484	CHANNEL LINING CLASS III	92.000	TON		
0910	02625	REMOVE HEADWALL	1.000	EACH		
SECTION 0004 BRIDGE						
0920	02231	STRUCTURE GRANULAR BACKFILL	116.000	CUYD		
0930	02998	MASONRY COATING	2,618.000	SQYD		
0940	03299	ARMORED EDGE FOR CONCRETE	56.000	LF		
0950	08001	STRUCTURE EXCAVATION-COMMON	428.000	CUYD		
0960	08002	STRUCTURE EXCAV-SOLID ROCK	65.000	CUYD		
0970	08003	FOUNDATION PREPARATION	(1.00)	LS		
0980	08020	CRUSHED AGGREGATE SLOPE PROT	100.000	TON		
0990	08033	TEST PILES	96.000	LF		
1000	08039	PRE-DRILLING FOR PILES	717.000	LF		

CONTRACT ID: 111312
COUNTY: PIKE
PROPOSAL: APD 80-6 (035)

PAGE: 6
LETTING: 04/29/11
CALL NO: 107

LINE NO	ITEM	DESCRIPTION	APPROXIMATE QUANTITY	UNIT	UNIT PRICE	AMOUNT
1010	08046	PILES-STEEL HP12X53	1,522.000	LF		
1020	08094	PILE POINTS-12 IN	39.000	EACH		
1030	08100	CONCRETE-CLASS A	1,058.300	CUYD		
1040	08104	CONCRETE-CLASS AA	686.700	CUYD		
1050	08150	STEEL REINFORCEMENT	180,675.000	LB		
1060	08151	STEEL REINFORCEMENT-EPOXY COATED	200,841.000	LB		
1070	08160	STRUCTURAL STEEL (817,624 LBS)	(1.00)	LS		
1080	08170	SHEAR CONNECTORS (2,520 LBS)	(1.00)	LS		
1090	08500	APPROACH SLAB	168.000	SQYD		
1100	21532ED	RAIL SYSTEM TYPE III	1,536.000	LF		
SECTION 0005 WATERLINE						
1110	01093	DUCTILE IRON PIPE-6 IN (PJ WATER LINE)	630.000	LF		
1120	01097	DUCTILE IRON PIPE-10 IN (PJ WATER LINE)	3,000.000	LF		
1130	01315	BLOW-OFF ASSEMBLY	1.000	EACH		
1140	03460	TIE-IN TO WATER LINE (EXISTING)	5.000	EACH		
1150	03495	AIR RELEASE VALVE	1.000	EACH		
1160	03524	GATE VALVE-4 IN (RESILIENT WEDGE)	1.000	EACH		
1170	03526	GATE VALVE-6 IN (RESILIENT WEDGE)	5.000	EACH		
1180	03530	GATE VALVE-10 IN (RESILIENT WEDGE)	5.000	EACH		
1190	21346ND	WATER SERVICE RECONNECT-3/4 IN-1 IN	8.000	EACH		
1200	21384ED	BORE AND JACK PIPE-6 IN (ENCASED)	80.000	LF		

CONTRACT ID: 111312
 COUNTY: PIKE
 PROPOSAL: APD 80-6 (035)

PAGE: 7
 LETTING: 04/29/11
 CALL NO: 107

LINE NO	ITEM	DESCRIPTION	APPROXIMATE QUANTITY	UNIT	UNIT PRICE	AMOUNT
1210	21558EC	SERVICE LINE - 1 IN	700.000	LF		
SECTION 0006 TRAINEES						
1220	02742	TRAINEE PAYMENT REIMBURSEMENT 1 ARTICULATOR TRUCK DRIVER	1,600.000	HOUR		
SECTION 0007 MOBILIZATION / DEMOBILIZATION						
1230	02568	MOBILIZATION (NO MORE THAN 5%)		LUMP		
1240	02569	DEMOBILIZATION (AT LEAST 1.5%)		LUMP		
		TOTAL BID				